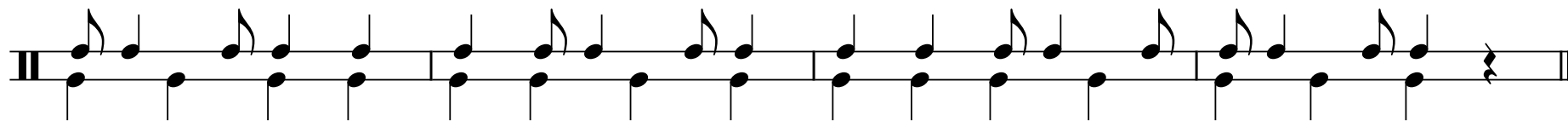
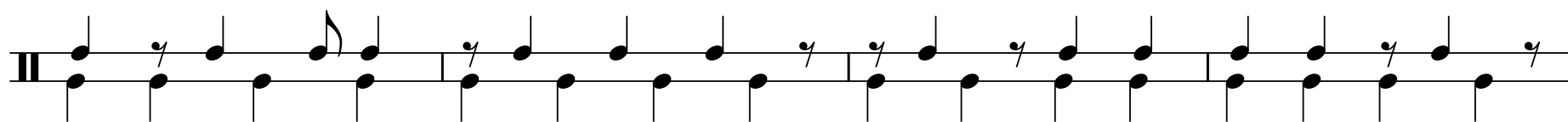
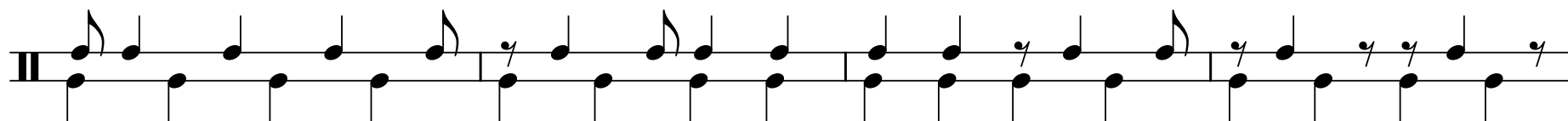
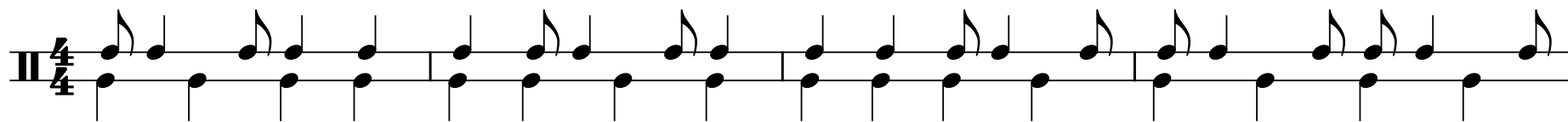


8th Note Syncopation Exercise



8th Note Syncopation Lesson Drum Set Grooves

The first groove is written in 4/4 time. The top staff uses a rhythmic notation where 'x' marks the drum hits. The first 'x' is on the first eighth note of the first measure, followed by a pair of 'x's on the eighth and sixteenth notes of each of the next seven measures. The bottom staff shows the corresponding bass drum pattern: a quarter note on the first beat, followed by quarter notes on the second, third, and fourth beats of each measure.

The second groove is in 4/4 time. The top staff features a syncopated eighth note on the first eighth of the first measure, followed by pairs of 'x's on the eighth and sixteenth notes of the next seven measures. The bottom staff shows a bass drum pattern starting with a quarter note on the first beat, followed by quarter notes on the second, third, and fourth beats. The final measure includes a triplet eighth note pattern on the bass drum.

The third groove is in 4/4 time. The top staff begins with a syncopated eighth note on the first eighth of the first measure, followed by pairs of 'x's on the eighth and sixteenth notes of the next seven measures. The bottom staff shows a bass drum pattern starting with a quarter note on the first beat, followed by quarter notes on the second, third, and fourth beats of each measure.

16th Note Syncopation Exercise

The first staff of music is in 4/4 time, indicated by a double bar line and the 4/4 time signature. It consists of two staves. The upper staff contains a sequence of rhythmic patterns: four groups of four sixteenth notes each, followed by a quarter rest, then two groups of four sixteenth notes each, followed by a quarter rest, and finally a group of four sixteenth notes. The lower staff contains a sequence of four quarter notes, followed by a quarter rest, and then three more quarter notes. The exercise concludes with a double bar line.

The second staff of music is in 4/4 time, indicated by a double bar line and the 4/4 time signature. It consists of two staves. The upper staff contains a sequence of rhythmic patterns: a quarter note followed by a quarter rest, then a group of four sixteenth notes, followed by a group of four sixteenth notes with a slur underneath, then a group of four sixteenth notes, followed by a quarter rest, then a group of four sixteenth notes, followed by a group of four sixteenth notes with a dot above the final note, and finally a group of four sixteenth notes. The lower staff contains a sequence of four quarter notes, followed by a quarter rest, and then three more quarter notes. The exercise concludes with a double bar line.

16th Note Syncopation Lesson Drum Set Grooves

The first groove is written in 3/4 time. The top staff uses a treble clef and contains a series of 16th notes with stems pointing down, marked with an 'x' to indicate a cymbal. The notes are grouped into four measures: the first measure has a quarter note followed by two eighth notes; the next two measures each have a quarter note followed by two eighth notes; the final measure has a quarter note followed by two eighth notes. The bottom staff uses a bass clef and contains a series of quarter notes, also marked with an 'x' to indicate a cymbal. The notes are grouped into four measures: the first measure has a quarter note followed by two eighth notes; the next two measures each have a quarter note followed by two eighth notes; the final measure has a quarter note followed by two eighth notes. Both staves begin with a dynamic marking of $y.$ and a first ending bracket.

The second groove is written in 3/4 time. The top staff uses a treble clef and contains a series of 16th notes with stems pointing down, marked with an 'x' to indicate a cymbal. The notes are grouped into four measures: the first measure has a quarter note followed by two eighth notes; the next two measures each have a quarter note followed by two eighth notes; the final measure has a quarter note followed by two eighth notes. The bottom staff uses a bass clef and contains a series of quarter notes, also marked with an 'x' to indicate a cymbal. The notes are grouped into four measures: the first measure has a quarter note followed by two eighth notes; the next two measures each have a quarter note followed by two eighth notes; the final measure has a quarter note followed by two eighth notes. Both staves begin with a dynamic marking of $y.$ and a first ending bracket.